

ISEKI

MICROTUNNELLING

HIRE JOB RECORD

since 1984

- *26 years of experience in the UK, Europe, Africa and elsewhere*
- *Over 80 km of microtunnel installed*
- *Working with over 90 contractors in 26 countries*



Distributor for Iseki Poly-Tech, Inc.
Sales: Europe, Middle-East, Africa,
Indian sub-continent
Hire: Worldwide



1984-1989

DATE	COUNTRY	CONTRACTOR	PROJECT	m	PIPE	SYSTEM	SOIL	DRIVES
Oct-84	UK	Queghan (SCS) Ltd	Irk Vale Sewer	110	1000 ID Concrete	TCM1220	Soft clay & sand	1
Jan-85	UK	John Mowlem plc	Central Sewer, stage IV	500	1500 ID Concrete	TCM 1800	Loose sand & gravel	3
Feb-86	Germany	Dyckerhof & Widman	Ingolstatt –multi-service ducts	220	615 ID Steel	TCC 660	Clay & marl	2
May-86	UK	T. Kilroe & Sons Ltd	Dukinfield –sewer	360	1500 ID Concrete	TCM 1800	Clay, sand	3
Jun-86	UK	Thyssen (GB) Ltd	S.W. Interceptor Sewer	360	500 ID C lay & Conc	TCC 660	Soft silty clay	5
Jun-86	UK	Thyssen (GB) Ltd	S.W. Interceptor Sewer	900	1000 ID Concrete	TCC 1220	All types	4
Jul-86	UK	B.B. Kirk	Dalton Sewerage	110	1000 ID Concrete	TCC 1220	Loose sand & gravel	1
Jan-87	UK	White Cross T.C. Co. (1985) Ltd	Osboldwick Pumping Station	400	500 ID C lay & Conc	TCC 660	Soft silty clay & cobbles	4
Apr-87	UK	D Justice Ltd	Sewer	25	500 ID GRC	TCC 660	Full material	1
Jun-87	UK	Miller Construction Ltd	Birmingham Business Park	75	500 ID Concrete	TCC 660	Gravel & cobbles	1
Oct-87	UK	Lilley Construction Ltd	Burnham on Sea –sewerage	300	1000 ID Concrete	MEPCB 1220	Soft & silty clay	1
Nov-87	UK	Lilley Construction Ltd	Burnham on Sea –sewerage	33	500 ID Concrete	TCC 660	Soft & silty clay	1
Feb-88	UK	Lilley Construction Ltd	Thurrock Southern Trunk Sewer	93	1000 ID Concrete	TCC 1220	Peat & clay	2
Mar-88	UK	Lilley Construction Ltd	Southern Relief Sewer	120	1000 ID Concrete	TCC 1220	Soft silty clay	2
Apr-88	UK	Queghan (S.C.S.) Ltd	Sewer Outfall	105	1000 ID Concrete	TCC 1220	Gravel & chalk	1
Apr-88	UK	Lilley Construction Ltd	Southern Relief Sewer	1200	1000 ID Concrete	TCM 1220	Soft silty sand & clay	4
Apr-88	UK	Rees/Hough C.E. Ltd	Harwich	106	500 ID GRC	TCC 660	Soft silty clay	1
Jun-88	UK	White Cross T.C. Co. (1985) Ltd	Metro Centre Gateshead	210	500 ID C lay	TCC 660	Soft silty clay	3
Sep-88	UK	Eve Construction Ltd	Darenth Valley Sewer Stage II	90	500 ID Concrete	TCC 660	Silt, sand & gravel	1
Nov-88	UK	Mcfadden & Co Ltd	Elworth Trunk Main Warmingham	50	500 ID St. welded	TCC 660	Fine wet sand	1
Jan-89	UK	Darby & Nolan Ltd	Goldington Bedford	45	500 ID Concrete	TCC 660	Sticky clay	1
May-89	Germany	Meyer & John	Munich Bastell –district heating	80	2.5m long steel	TCC 1220	Gravel, sand & cobbles	2
Jul-89	UK	Norwest Holst	Keckwick Pumping Station	138	675 ID Concrete	TCC 870	Fine wet sand gravel	2
Jul-89	UK	Kennedy Construction	Grane Road, Haslingden	370	500 ID Concrete	TCC 660	Clayey sand & gravel	4
Jul-89	Holland	Mikrotunnel V o F	Gaag –gas pipeline	110	2.5m long steel	TCC 419	Very soft sand	1
Jul-89	France	Montocol	France –sewer pipeline	80	500 ID Concrete	TCC 660	Soft sand	2
Aug-89	UK	Kilroe Civil Engineering	Caerphilly –resewerage	650	675 ID Concrete	TCC 870	Mixed	8
Aug-89	Norway	Strom Gundersen	Drammen –sewer pipeline	625	2.5m long steel	TCC 1220	Clay, silt & sand	10
Nov-89	UK	Rees Hough C.E. Ltd	Folkestone	2250	2100 ID pipes & Segments	TCM 2540	Sand, silt/clay	3
Nov-89	UK	Balfour Beatty (Scotland) Ltd	Baillieston	30	500 ID Concrete	TCC 660	Boulder clay & cobbles	1



Tunnelling around historic Caerphilly Castle

Segment erection at Folkestone

1990-1992

DATE	COUNTRY	CONTRACTOR	PROJECT	m	PIPE	SYSTEM	SOIL	DRIVES
Jan-90	Belgium	LL & N Demeyer	NMP	208	620 ID steel	TCC 660	Sand, silt	2
Feb-90	UK	Lilley Construction	Neath Link I	60	1000 ID concrete	TCC 1220	Clay, gravel, sand	1
Apr-90	UK	Vincent Nally	Fleetwood	160	500 ID concrete	TCC 660	Fine silty sand	2
Apr-90	Belgium	Mikrotunnel V o F	Charleroi-Telecom ducts	200	1000 ID concrete	TCC 1220	Small stones and shale	2
May-90	UK	Lilley Construction	Neath	90	500 ID concrete	TCC 660	Clay	2
Jul-90	France	Borie SAE	Le Mans –sewer pipeline	95	400 ID concrete	TCC 660	Sand and clay	2
Aug-90	Norway	Strom Gundersen	Drammen 2 –sewer pipeline	360	300 ID clay	TCC 432	Sensitive clay	8
Sep-90	UK	MTM Construction	Seafood Park, Aberdeen	118	675 ID concrete	TCC 870	Sand & cobbles	2
Oct-90	UK	J.E. Browne Ltd	Sawbridgeworth	109	675 ID concrete	TCC 870	Alluvial Gravels	1
Oct-90	UK	Microline	Cockham	140	1000 ID concrete	TCC 1220	Stone & Sand	1
Jan-91	UK	Johnston Construction	Castleford, Wheldon Road	563	1000 ID concrete	TCC 1220	Sand & Clay	4
Mar-91	UK	Rees Hough C.E.	Kings Lynn 1	380	500 ID concrete	TCC 660	Sand and Clay	6
Apr-91	Italy	Impresa Caggiati SRL	Via Lombardia –sewer pipeline	350	1200 ID concrete	TCC 1450	Sand, gravels and cobbles	2
Apr-91	UK	Rees Hough C.E.	Kings Lynn 2	591	675 ID concrete	TCC 870	Clay and Peat	10
May-91	UK	Eve Construction	Brooklands	155	500 ID concrete	TCC 660	Water-bearing silts	2
May-91	UK	J.F. Donelon	Stoke-on-Trent	305	1200 ID concrete	TCC 1450	Clay & contaminated tip	2
Sep-91	UK	Barhale Construction	Branston	114	2100 ID concrete	TCM 2540	Sandy gravel underlain	1
Nov-91	UK	Queghan Civil Engineering Ltd	Theale Foul Sewerage	154	500 ID concrete	TCC 660	Gravel, Thames Ballast.	2
Dec-91	France	Chantiers Modernes	Champigny, Marne, near Paris	106	400 ID concrete	TCC 660	Gravel, sand and cobbles	1
Feb-92	Austria	Porr	Bruckhausen 21 Vienna –sewer	2500	300 + 400 ID clay	TCC 432	Silts, sands and gravels	54
Feb-92	Austria	Porr	Bruckhausen 21 Vienna –sewer	1150	600 ID clay	TCC 780	Silts, sands and gravels	24
Feb-92	Belgium	Derys	Zeebrugge –sewer pipeline	80	1500 ID concrete	TCM 1800	Sand	1
Feb-92	UK	Eve Construction	Pirbright	110	600 ID concrete	TCC 780	Silts & sands	1
Apr-92	France	Dev in Le Marchand	Dreux –sewer pipeline	100	675 ID concrete	TCC 870	Gravels and sand	1
Apr-92	France	Dev in Le Marchand	Dreux –sewer pipeline	160	500 ID concrete	TCC 660	Clay, chalk with flints	2
May-92	UK	J.F. Donelon	Manor Park Foul sewer	529	500 ID concrete	TCC 660	Silty sand. High water.	9
Jul-92	UK	Dredging and Construction	Tywyn Outfall	35	1200 ID concrete	TCC 1450	Sand and gravel	1
Jul-92	France	Sogexi	St. Colombes –sewer pipeline	130	600 ID concrete	TCC 780	Alluvium. Sand & gravel	2
Jul-92	Holland	Van Leeuwen	Appingedam –water pipeline	298	1016 OD steel	TCC 870/1036	Silty, clayey sand	4
Jul-92	Holland	Visser & Smit	Groningen Gas pipeline	86	1206 OD steel pipe	TCC 1220	Sand	2
Aug-92	France	Sogexi	Viroflay SNCF –sewer pipeline	63	600 ID concrete	TCC 780	Clay	1
Sep-92	UK	Rees Hough/Barhale/Murphy	Chiswick area foul water sewer	1160	1500 ID concrete	TCC 1800	Clay, sand & gravel	5
Sep-92	France	Sogexi/Chantiers Modernes JV	Rouen –sewer pipeline	181	600 ID concrete	TCC 780	Coarse sand, silt	2
Oct-92	UK	Cementation Mining	Grangemouth	86	1000 ID concrete	TCC 1220	Silt, sand & clay	1
Oct-92	UK	Queghan Civil Engineering Ltd	Theale Foul Sewerage	60	500 ID concrete	TCC 660	Gravel, Thames ballast.	1
Dec-92	France	Chantiers Modernes/FTS	Courbevoie –sewer pipeline	340	500 ID concrete	TCC 660	Flinty marl and gravel	5
Dec-92	France	Sade/Borie SAE	Vity T5 –sewer pipeline	105	1200 ID concrete	TCC 1450	Clay, gravels	1



Starting at Champigny



...and at Stoke



Machine recovery doesn't come any easier than driving the machine through a wall onto a trailer, like here at Le Mans!

1993-1995

DATE	COUNTRY	CONTRACTOR	PROJECT	m	PIPE	SYSTEM	SOIL	DRIVES
Jan-93	France	Chantiers Modernes	Villetaneuse –sewer pipeline	70	600 ID concrete	TCC 780	Sandy, silty clay	1
Jan-93	Turkey	STFA	Istanbul –sewer pipeline	142	675 ID concrete	TCC 870/875	Rock, sand, gravel, clay	2
Apr-93	Germany	TRP (Brochier Group)	Potsdam –sewer pipeline	260	600ID clay	TCC 780	C lay, sand, gravel, boulders	4
May-93	UK	Johnston C construction	Cheltenham Wy mans Brook	470	1200 ID	TCC 1450	Sand, clay	2
Jun-93	Germany	Mandler-Schifferstein	Merseburg –sewer pipeline	365	500 ID concrete	TCC 660	C lay, sand, gravel	4
Jul-93	France	Dev in le Marchand	Le Plaisir Paris –sewer pipeline	100	700 ID concrete	TCC 780	C lay, gravels	1
Sep-93	UK	Miller C construction	MEPAS (Highways A uthority)	140	1500 ID concrete	TCP 1800	Weathered sandstones	2
Sep-93	Germany	Itterwerke	Muhlhausen –sewer	197	675 ID concrete	TCC 870	Mixed	3
Nov-93	Germany	Teichmann	Dresden-O krilla –sewer	96	675 ID clay	TCC 870	Mixed	2
Dec-93	Germany	Teichmann	Horsmar	180	657 ID clay	TCC 870	Mixed, soft rock	2
Dec-93	Germany	Beton & Monierbau	Lünen –sewer	111	1000 ID concrete	TCC 1220	Mixed	1
Jan-94	Saudi	Aject Thrustboring Division	Ibsina Mixed Butane pipeline	280	350 ID steel sl. Conc.	TCZ 420	Loose sand	4
Jan-94	Abu Dhabi	Aject Thrustboring	ADNOC/SAIPEM Highway	130	350 ID steel sl. Conc.	TCZ 420	Loose sand	2
Mar-94	Austria	Seidl (Kapfenberg)	Salzburg Rail Crossing	170	1200 ID concrete	TCC 1450/1510	Mixed	1
Apr-94	Belgium	Boormaatchappij	Sewer installation	150	900 ID concrete	TCC 1100	C lay, gravel	2
May-94	UK	Eve Construction	Rickmansworth –sewer	156	1200 ID concrete	TCC 1450	Mixed	1
Jun-94	UK	AMEC	Chiswick Highway –sewer	155	1500 ID concrete	TCP 1800	Thames ballast	2
Jun-94	Holland	NACAP	Ryksweg Gasline	180	675 ID steel	TCC 870	Mixed (incl. timber)	2
Jul-94	France	DGC	Paris, Rue La Condamine	128	500 ID concrete	TCC 660	C lay, gravel, limestone	2
Oct-94	UK	Barhale Construction plc	Caerphilly –sewer	50	675 ID concrete	TCC 870	Mixed	1
Oct-94	UK	Microline Tunnelling	New Forest –sewer	200	600 ID concrete	TCC 780	Gravels	2
Oct-94	Germany	TRP	Fredersdorf –sewer	480	400 ID concrete	TCC 575	Cobbles, gravels	5
Nov-94	UK	Microline Tunnelling	Heathrow airport (runway crossing)	50	600 ID concrete	TCC 780	Mixed	1
Dec-94	Germany	N. German pipe manufacturers	Hamburg harbour –sewer	170	400 ID concrete	TCC 545	Sand	6
Dec-94	UK	VJ Donegan	Crewe –railway crossing	82	600 ID concrete	TCC 780	Mixed	1
Jan-95	Saudi	Aject Thrustboring Co	Highway C crossing	140	1247 OD steel	TCM 1247	Hard rock, clay	2
Mar-95	France	Dev in Le Marchand Env ironment	Dreux –sewer (river crossing)	140	675 ID concrete	TCC 870	F lints	2
Mar-95	France	DLE/SMCE	Calais –sewer	430	1000 ID concrete	TCC 1220	F ine sand	2
Mar-95	UK	Kilroe Civil Engineering	Grays, -sewer installation	251	1500 ID concrete	TCC 1820	C lay, gravels	2
Mar-95	UK	AMEC Tunnelling	East Ham –sewer installation	424	1500 ID concrete	TCP 1800	C lay, gravels	2
Apr-95	Holland	Nacap	Barendrecht –sewer installation	60	30" steel	TCC 780	Sands, silts	2
Apr-95	Spain	Geocisa	Villaviciosa –sewer installation	264	1450 ID concrete	TCC 1450	Cobbles, boulders	1
May-95	Austria	Seidl/Maculan Bahnbau	Salzburg	1130	300 ID GRP	TCC 432	Sand, gravels, silt, clay	14
Jun-95	France	Cofex	St Malo –sewer installation	70	1450 ID concrete	TCC 1520	Sand, gravels	1
Jun-95	UK	Johnston Construction	Spalding –sewer installation	200	900 ID concrete	TCC 1100	Sands, silts	2



The machine descends into the shaft in Istanbul



Unloading the machine at St. Malo

1995-1998

DATE	COUNTRY	CONTRACTOR	PROJECT	m	PIPE	SYSTEM	SOIL	DRIVES
Jul-95	UK	AMEC	East Ham –road crossings	180	900 ID concrete	TCC 1120	Sand, gravel	1
Aug-95	France	EEE	Avignon	100	600 ID concrete	TCC 780	Silts	1
Aug-95	UK	Miller Civil Engineering	Woolwich Docklands –sewer	360	1500 ID concrete	TCP 1800	Variable ground	2
Sep-95	UK	Delta Civil Eng. Co Ltd	Swansea Bay Bathing Waters	695	1200 ID concrete	TCC 1450	Mixed ground	3
Sep-95	UK	Nacap Nederland bv	Velzen –sewer installation	288	48" steel	TCC 1240	Soft peat, sand	3
Sep-95	Spain	Tecniland	Aviles –sewer installation	142	1200 ID concrete	TCC 1520	Hard ground	3
Sep-95	UK	Murphy Pipelines	Teesside –gas line installation	73	600 ID steel	TCC 660	Made ground, slag	2
Sep-95	Germany	Mohnte + Schütt	Köpnick –sewer installation	224	600 ID concrete	TCC 780	Mixed ground, boulders	4
Oct-95	Belgium	Derys	Wavre –sewer installation	300	1200 ID concrete	TCC 1450	Sand, silt, sandstone	1
Nov-95	France	Decuense Giral	Noisy	85	675 ID concrete	TCC 870	Mud, limestone	1
Jan-96	UAE	Dhabi Contracting	Madinet Zaved	5000	500 ID concrete	TCC 660 (x2)	Sand	70
Feb-96	UK	Barhale	Kent	148	600 ID concrete	TCC 780	Sand	2
May-96	Belgium	Maasland	Aarschot	100	1200ID concrete	TCC1450	Silt, sand	1
May-96	Holland	Van Leeuwen	Gas Unie	100	42" steel	TCC 1100	Silt, sand	1
Jun-96	Belgium	Van Leeuwen	Maastricht	100	1500 ID concrete	TCP 1800	Sand, gravel	1
Jun-96	Spain	OCP	Bilbao-Las Arenas	1788	800 ID concrete	TCC 870/1024	Silt, sand	18
Jul-96	Spain	OCP	Bilbao-Interceptor Gobela	1077	1800 ID concrete	TCM 2220	Silt, sand	4
Aug-96	France	D.G. Construction	Coulommiers (Paris)	300	900 ID concrete	TCC 1120	Sand, gravels, cobbles	2
Aug-96	France	D.G. Construction	Arenc (Marseille)	190	900 ID concrete	TCC 1120	Clay, sand, gravels	2
Aug-96	UK	Kvaerner	Felixstowe O utfall Sewer	834	1200 ID concrete	TCC 1450	Mixed ground	5
Sep-96	UK	Kvaerner	Felixstowe O utfall Sewer	734	1200 ID concrete	TCC 1450	Clay, mudstone bands	5
Mar-97	Czech Rep.	Subterra	Usti Nad Labem	90	650 ID GRP	TCC 780	Rock, boulders, gravel	2
Jul-97	Spain	Ferrovial	Rio Noreña	130	1200 ID concrete	TCC 1490	Sand, fill, mudstone	3
Aug-97	UK	Amey Donelon	River Kelvin Crossing	90	1500 ID concrete	TCP 1800	Silt, sand, cobbles, boulders	1
Sep-97	Czech Rep.	Subterra	Usti Nad Labem	654	1600 ID concrete	TCP 1860	Sand, gravel	3
Oct-97	Spain	Nesco	Bilbao-Interceptor Gobela	201	1800 ID concrete	TCM 2220	Silt, sand	1
Nov-97	Spain	Nesco	Bilbao-Collector Zorroza	208	800 ID concrete	TCC 870/1024	Silt, sand	2
Jan-98	UK	Johnston	Queenborough	200	900 ID concrete	TCC 1120	Clay, mudstone bands	5
Jan-98	Ireland	Sorensen	Railway Yard & Malville Terrace	262	1000 ID concrete	TCC1220	Silt, sand, gravel, boulders	3
Feb-98	UK	McNicholas	Docklands On Line Replacement	45	300 ID concrete	TCC 432	Clay pipe and pea gravel	1
Mar-98	Italy	Serpelloni	Padova	44	400 ID polycrete	TCC 575	Silt, sand	1
Apr-98	Italy	Serpelloni	Gravellona Toce	330	800 ID polycrete	TCC 870/980	Sand, gravel	3
Apr-98	Spain	Obras Subterranas	Santa Catalina	905	1500 ID concrete	TCM 1880	Sand	3
Jun-98	UK	M J C Clancy Ltd.	Dover –road crossings	1097	1500 ID concrete	TCP 1800	Chalk	7
Jun-98	UK	M J C Clancy Ltd.	Boscombe	38	600 ID concrete	TCC 780	Silts, sands	1
Jul-98	UK	F & B Ltd.	Hatton to Silk Willoughby	220	1020 steel	TCC 1120	Sand, gravel	2
Oct-98	UK	George Leslie Ltd.	Ayr, Scotland	200	900 ID concrete	TCC 1120	Sand, gravel	1
Nov-98	UK	George Leslie Ltd.	Ayr, Scotland	1620	2400 ID concrete	TCC 2845	Clay, silt, sand, gravel	11



Lowering the machine into the shaft at Santa Catalina



The upsized machine for Rio Noreña awaits collection in the workshop in the United Kingdom



The 2400 i.d. Unclemole machine, loaded for despatch to Ayr

1999-2003

DATE	COUNTRY	CONTRACTOR	PROJECT	m	PIPE	SYSTEM	SOIL	DRIVES
Jan-99	UK	McNicholas	Sidcup	330	300 ID clay	TCC 432	C lay/silt, gravel	4
Mar-99	UK	Nuttall	Dover (Railtrack)	55	56" steel	TCC 1450	C chalk	2
Mar-99	UAE	Al-Futtaim Tarmac	Dubai	240	2000 ID GRP	TCMS 2140	Cemented sand	3
May-99	UK	Queghan Civil Eng. Ltd.	Mudford	190	1000 ID concrete	TCC 1220	Sand, silts, gravel	1
May-99	UK	McNicholas Construction plc	Blackfen –road crossings	330	600 ID concrete	TCC 780	Sand, silts, clay	4
Jun-99	UK	AMEC	Cardiff CSO	600	1500 ID concrete	TCP 1800	Silt, clay	4
Aug-99	UK	Johnston	Royal Arsenal	420	300 ID clay	TCC432	Sand	8
Oct-99	Ireland	Murphy International	Abbotstown –rail crossing	70	675 ID concrete	TCC 870	C lay, cobble, boulders	1
Feb-00	UK	Johnston	Filey & Seamer (Railtrack)	129	400 ID concrete	TCC 545	C lay, cobble, silt & sand	2
Mar-00	UK	George Leslie Ltd.	Prestwick (Railtrack)	140	1200 ID concrete	TCC 1450	C lay, cobble, silt & sand	2
Apr-00	Ireland	Sorensen	Cork	526	900 ID concrete	TCC1120	Mixed	4
Apr-00	UK	Delta Civil Eng. Co Ltd	Portsmouth	9	1500 ID concrete	TCP1800	Sand, silt	1
Apr-00	Ireland	Hambra Construction Ltd	Kilkenny –road crossings	110	823 ID concrete	TCC 870/940	C lay, gravels	1
Apr-00	UK	Galliford	Zeneca	113	600 ID concrete	TCC 780	C lay, gravels	2
Apr-00	Italy	Serpelloni	Turin	36	300 ID clay	TCC 432	Silt, clay	1
May-00	Ireland	Sorensen	Cork	1000	600 ID concrete	TCC 780	Silts, gravels, cobbles	10
Jun-00	Czech Rep.	VOKD	Ostrava	240	1000 ID concrete	TCC1220	C lay, sand, gravels	2
Nov-00	Poland	Ajmix	Warsaw	400	300 ID clay	TCC 432	Sand, silt	7
Feb-01	UK	McNicholas	Bexley	705	1200 ID concrete	TCC1450	C lay, sand & gravel	4
Feb-01	Ireland	Ascon	Sutton	300	1000 ID concrete	TCM 1220	Sand, silt	1
Apr-01	UK	Delta Civil Eng. Co Ltd	Tempsford	67	300 ID clay	TCC 432	C lay, gravels, cobbles	1
Mar-01	Ireland	Ascon	Sutton	300	1400 ID concrete	TCM 1740	Sand, silt	1
Aug-01	Italy	Serpelloni	Pescara	65	1200 ID concrete	TCC 1510	Mixed	1
Aug-01	Ireland	Sorensen	Cork	160	400 ID	TCS 576	Sandstone rock	4
Aug-01	Ireland	Sorensen	Cork	25	800 ID	TCC 870/940	Mixed	1
Aug-01	UK	Barhale	Roman Gravels	55	24" steel	Numa 24"	Mudstone	1
Oct-01	UK	Johnston	Cawood	140	600 ID concrete	TCC 780	C lay	2
Oct-01	Spain	Obras Subterranas	Zamora	540	1500 ID concrete	TCC1880	Schist	1
Dec-01	UK	Active Tunnelling	Branston	40	1000 ID concrete	TCC1220	C lay, gravels, cobbles	1
Jan-02	UK	Delta Civil Eng. Co Ltd	Gillingham	48	500 ID clay	TCC660	C chalk, flint	2
Sep-02	UK	McNicholas	Harwell	1100	300 ID clay	TCC432	C chalk, chalk rock	11
Oct-02	Poland	Ajmix	Warsaw	100	1000 ID concrete	TCC1249	Sand, clay	2
Oct-02	UK	Donegan	Llandudno	462	1200 ID concrete	TCC1450	C lay, sand, gravels, cobbles	3
Jan-03	UK	McNicholas	Harwell	300	250 ID clay	TCC375	C chalk, chalk rock	5
Feb-03	UK	Donegan	Llandudno	110	400 ID clay	TCC575	C lay, sand, gavel, cobbles	3
Apr-03	Poland	PRG Metro	Warsaw	120	1820 OD Steel	TCC1840	C lay, sand	2
May-03	UK	Barhale	Welwyn Garden City	300	1200 ID concrete	TCC1450	C chalk	1
May-03	UK	Johnston Construction	Exeter	174	600 ID clay	TCC780	Sand	2
Aug-03	UK	Johnston Construction	Kelfield, Yorkshire	90	400 ID clay	TCC575	C lay, sand	2
Dec-03	UK	Barhale	Hoddesdon	120	1200 ID concrete	TCC1450	Sands, gravels & chalk	1



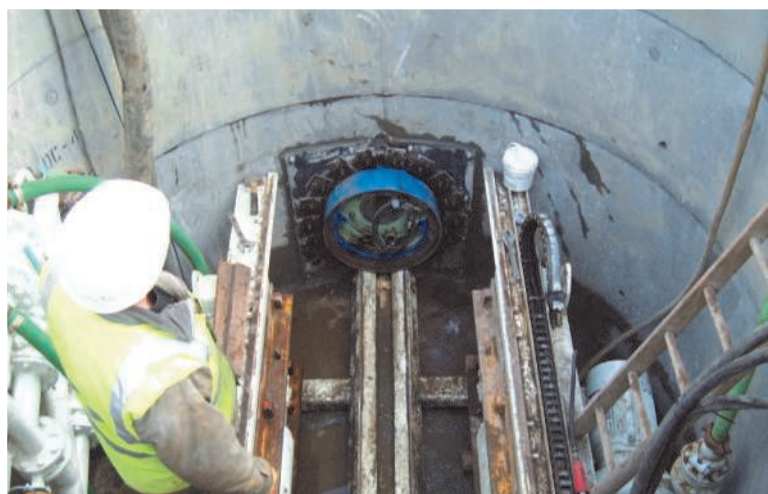
Launching in Dublin



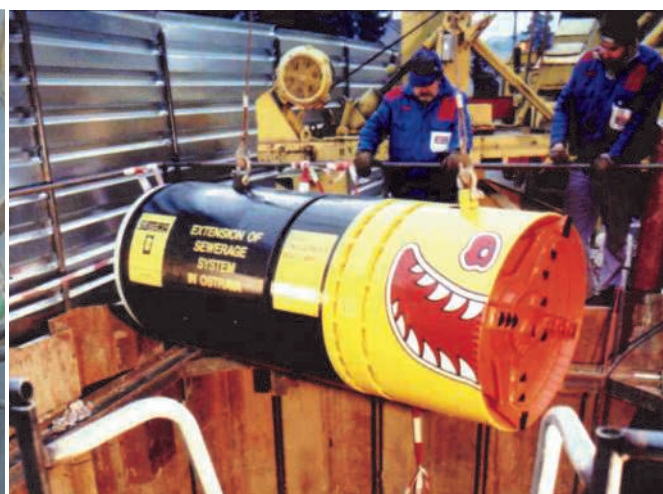
Our largest diameter to date: Athens Olympic Village

2004-2007

DATE	COUNTRY	CONTRACTOR	PROJECT	m	PIPE	SYSTEM	SOIL	DRIVES
Jan-04	Czech	Subterra	Ostrava	706	800 ID clay	TCC 980	Clay with some sand	9
Jan-04	Ireland	Dolmac	Swords	1170	500 ID clay	TCC 660	Hard clay, gravel boulders	17
Mar-04	Greece	AKTOR	Athens Olympic Village	313	2500 ID concrete	TCP3020	Clay, silt, sand	1
Mar-04	Poland	AJMIX	Sopot	310	1000 ID concrete	TCC 1300	Clay, sand	2
Apr-04	Czech	Subterra	Ostrava	172	600 ID clay	TCC 780	Clay with some sand	4
Jun-04	UK	Barhale	Leiston	50	1000 ID concrete	TCC 1220	Sand with some silt	1
Jun-04	UK	Barhale	Welwyn Garden City	330	1200 ID concrete	TCC 1450	Chalk	1
Jun-04	UK	Johnston Construction	Lewes	463	1200 ID concrete	TCC 1450	Chalk with flint gravel	2
Jul-04	UK	Murphy	Taplow	145	1800 ID concrete	TCM2160	Chalk with flint gravel	1
Jul-04	Poland	Ajmix	Konstancin	1143	400 ID polycrete	TCC 575	Sand and gravels	23
Aug-04	UK	Barhale	Barrow to Stonewall	75	1200 ID concrete	TCC 1450	Clay and sand	1
Jan-05	Poland	Ajmix	Modlinska	513	600 ID poly-crete	TCC 780	Sand, silt	5
Jan-05	UK	Fineturret	Bacton	140	1500 ID concrete	TCP1800	Silt, sands and gravels	2
Jan-05	UK	Amec	Wolverton	297	600 ID concrete	TCS790	Limestone/clay/sands/gravel	3
Mar-05	Italy	Serpelloni	Sicily	200	500 id clay	TCC 680	Silt /sand	2
Jul-05	UK	Murphy	Leicester	70	600 concrete	TCC 780	Very dense sand	1
Jul-05	UK	Murphy	Leicester	70	600 concrete	TCS790	Mudstone	1
Aug-05	Mexico	ICA	Mexico City Airport I	1308	1830 ID concrete	TCP2206	Soft clay with sand	3
Oct-05	UK	Johnston	Seahouses	130	500 ID clay	TCC 660	Sands, some gravel	2
Mar-06	UK	Johnston	M5 Bristol	65	600 ID clay	TCC 780	Stone fill & clay	1
Apr-06	Mexico	Tradeco	Mexico City Airport II	1246	1830 ID concrete	TCP2206	Soft clay with sand	4
Apr-06	Poland	PRG Metro	Czestochowa	164	1700 ID grp	TCC 1860	Sands, gravels & clay	2
Jul-06	UK	F & B Ltd.	River Lune	94	1500 ID concrete	TCC 1800	Silt/clay/cobbles/boulders	1
Aug-06	Portugal	OPCA	Coruche	1137	1400 ID concrete	TCM1700	Silt/sand/clay	4
Aug-06	Italy	Serpelloni	Sicily	120	1200 ID concrete	TCC 1520	Silt/clay	2
Nov-06	UK	Johnston Microtunnelling	Telford	70	250 ID clay	TCC 375	Sandy clay/sand lenses/gravel	1
Nov-06	UK	Johnston Microtunnelling	Margate	132	1200 ID concrete	TCC 1450	Clay	2
Jan-07	UK	Murphy	Stratford, London	50	2600 ID concrete	TCP3020	River terrace gravels/ clay	1
Jan-07	UK	Johnston Microtunnelling	Gosforth, Newcastle	418	500 ID concrete	TCC 660	Sand/gravel	6
Mar-07	UK	Barhale	Nuneaton	71	600 ID concrete	TCS790	Mudstone/boulder clay	1
May-07	Hungary	Betonut	Sopron	603	600 ID clay	TCC 780	Clays, sands, gravels	6
Jun-07	Poland	PRG Metro	Krakow	879	1400 ID concrete	TCC 1740	Clays, sands, gravels	6
Jun-07	UK	Barhale	Felindre to Brecon Gas Line	158	1800 ID concrete	TCP2160	Clays, silts, sands, gravels, cobbles, boulders	1
Jun-07	UK	Barhale	Greenwich Peninsula Main	180	1200 ID concrete	TCC 1450	Chalk, Thames ballast	1
Aug-07	UK	Delta	Ilford	214	500 ID clay	TCC 660	Gravels with cobbles, clay with gravels	2
Sep-07	UK	Active Tunnelling	Acton	450	600 ID concrete	TCC 780	London clay	6



Ready for the first pipe at Seahouses



Lowering the machine at Ostrava

2008-2010

DATE	COUNTRY	CONTRACTOR	PROJECT	m	PIPE	SYSTEM	SOIL	DRIVES
Jan-08	Czech	Subterra	Karviná	423	1000 ID clay	TCC 1292	C lay, sandy gravel/clay	5
Jan-08	UK	Barhale	London	750	1200 ID concrete	TCC 1450	London clay, river terrace gravels	5
Feb-08	Czech	Michlovsky	Plzen	200	600 ID clay	TCC 780	Sand, gravel, cobbles, boulders	2
Apr-08	Czech	Michlovsky	Prague Airport	100	900 ID grp	TCC 980	C lay	1
Apr-08	Czech	Subterra	Karviná	70	1400 ID clay	TCC 1640	C lay, sand, gravel, cobbles	1
Apr-08	UK	Perco	Ramsgate	480	300 ID clay	TCC 432	C chalk	8
May-08	Czech	Subterra	Karviná	1881	1400 ID grp	TCC 1520	C lay, sand, gravel	17
May-08	UK	Active Tunnelling	Thrumpton	254	1200 ID concrete	TCS1450	Mudstone, gravel	2
Jul-08	USA	EE Cruz	New York	574	300 ID Polycrrete	TCC 430	Sand, gravel	8
Aug-08	UK	Barhale	Albrighton	700	600 ID concrete	TCS 790	Mudstone, sandstone	8
Sep-08	UK	Barhale	Kingston	390	1200 ID concrete	TCC 1450	C lay	2
Oct-08	Poland	Ajmix	Walbrzych	280	1000 ID grp	TCC 1120	C lay, sand, gravel, cobbles	5
Oct-08	Ireland	Dolmac	Mullingar	220	1800 ID concrete	TCM2160	Silt	2
Nov-08	Czech	Tchas	Karviná	600	300 ID clay	TCC 432	C lay, sand, gravel	8
Jan-09	UK	Barhale	Great Yarmouth	238	1500 ID concrete	TCP1800	Sand, gravel	1
Jan-09	Slovakia	OHL	Banská Bystrica	223	1330 ID GRP	TCS1450	Limestone rock, gravels, cobbles, boulders, clay	2
Jan-09	UK	Perco	Newcastle-under-Lyme	110	600 ID clay	TCC 780	Sandstone, clay	2
Feb-09	UK	Donegan	C roes A tti, North Wales	37	1200 ID concrete	TCS1450	Boulder clay	1
Apr-09	Spain	Acciona	Barcelona	350	2500 ID concrete	TCP3020	Silt, sand	1
Apr-09	UK	Morgan Est	Stratford	70	600 ID concrete	TCC 780	C lays, sands, gravels, fill	2
Jun-09	UK	Gallagher	West Ham I	496	1200 ID concrete	TCC 1450	C lays, sands, gravels	4
Aug-09	UK	Gallagher	West Ham II	570	1200 ID concrete	TCC 1450	C lays, sands, gravels	3
Oct-09	UK	Carillion	West Ham III	160	1200 ID concrete	TCC 1450	C lays, sands, gravels	1
Oct-09	UK	Perco	Chartham Hatch	80	500 ID clay	TCC 660	Sands, gravels	2
Feb-10	Kuwait	Gallagher	KOC Road Crossings	300	48" steel	TCC 1240	Sands	5
Feb-10	UK	Gallagher	West Ham IV	85	1500 ID concrete	TCP1800	C lay, sands, calcrete layers	1
Mar-10	UK	Delta	ODA	75	700 ID clay	TCC 870	Sands, gravels, silty clay	1
Apr-10	Czech	Michlovsky	Prostejov	90	1200 ID clay	TCC 1450	Sand with cobbles	1
May-10	UK	Murphy	West-East Link Main	350	1530 ID concrete	TCP1800	C lay, silty sand, sands, gravels	3
Aug-10	Kuwait	Gallagher	Abu Fatira	(1000*)	500 ID polycrrete	TCC 680	Sand, cemented sand	12
Sep-10	Kuwait	Gallagher	Abu Fatira	(600*)	300 ID polycrrete	TCC 432	Sand, cemented sand	8
Oct-10	UK	Highfield	Leamington Spa	(560*)	1200 ID concrete	TCC 1450	Mudstone with clay	4
Nov-10	UK	Gallagher	Brighton	(970*)	1830 ID concrete	TCS2160	C chalk, flint	1



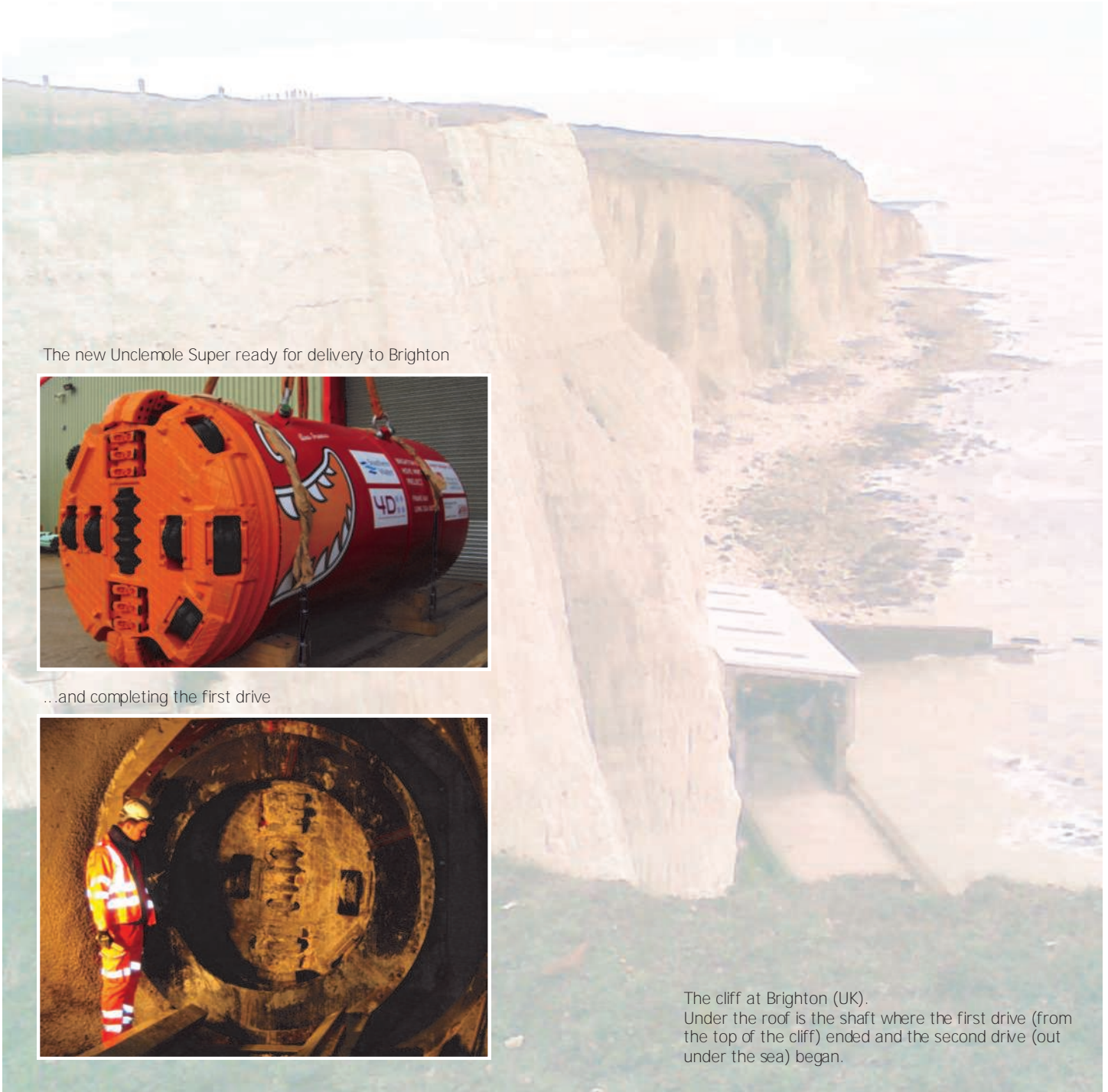
The TBM is lifted out of the water at Barcelona after completion of a sea outfall pipeline



The machine is lowered into the jacking shaft at the beginning of the West Ham (IV) project in London

2011-

DATE	COUNTRY	CONTRACTOR	PROJECT	m	PIPE	SYSTEM	SOIL	DRIVES
Jan-11	Oman	Gallagher	Salalah	140	48" OD steel	TCC 1240	Sand	2
Mar-11	Kuwait	Gallagher	KOC	(300*)	48" OD steel	TCC 1240	Sand, cemented sand	5
Apr-11	Czech	Subterra	Pardubice	143	1000 ID clay	TCC 1295	Sands, gravels, fill	1
May-11	Italy	Serpelloni	Bologna	(122*)	800 ID concrete	TCC 1120	C lay with sand	1
Total to May 2011 (excluding work in process*)				82303				



The new Unclemole Super ready for delivery to Brighton



...and completing the first drive



The cliff at Brighton (UK).
Under the roof is the shaft where the first drive (from the top of the cliff) ended and the second drive (out under the sea) began.

Distributor for Iseki Poly-Tech, Inc.

Sales: Europe, Middle-East, Africa, Indian sub-continent

Hire: Worldwide



Iseki Microtunnelling
Airfield Road
Hinwick
Wellingborough
NN29 7JQ
United Kingdom

tel: +44(0)1234 781166
fax: +44(0)1234 781992

email: info@isekimicro.com

website: www.isekimicro.com